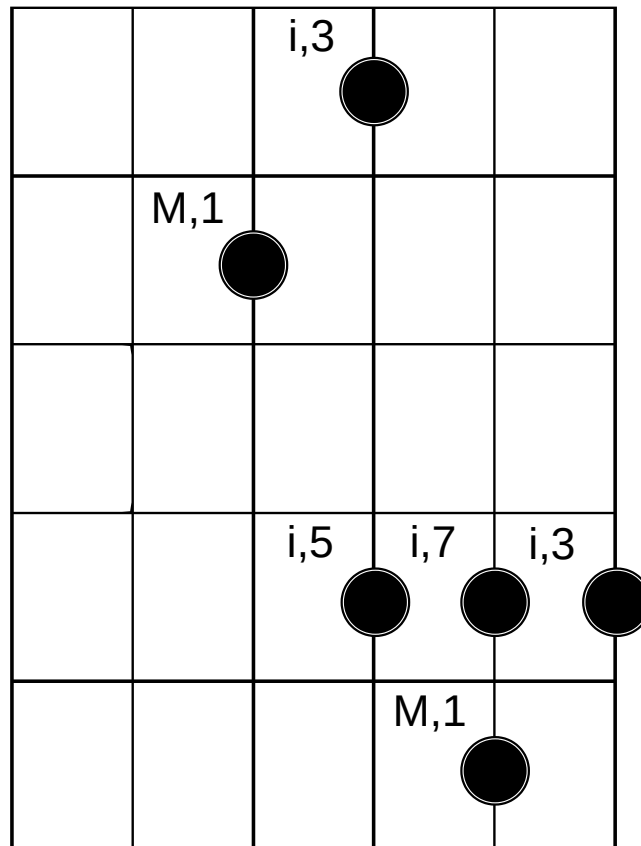




△(major) - lvl 1



Finger Key:

- i = Index
- M = Middle
- r = Ring
- P = Pinky
- N = None (Open)

**FORWARD POSITION
ROOT 4**

1	x	x	x	3	x	x	5	x	x	x	7
----------	----------	----------	----------	----------	----------	----------	----------	----------	----------	----------	----------



Chord Compatibility:

- sus2
- sus
- \triangle
- $\triangle 6$
- $\triangle 7$
- $\triangle 7sus$
- $\triangle 7sus2$

Key Examples:

Scale	1	x	x	x	3	x	x	5	x	x	x	7
C	C	x	x	x	E	x	x	G	x	x	x	B
G	G	x	x	x	B	x	x	D	x	x	x	F#
E	E	x	x	x	G#	x	x	B	x	x	x	D#

Staff Illustration:

Notes: 1 C 3 E 5 G 7 B 8 C 3 E | 1 G 3 B 5 D 7 F# 8 G 3 B | 1 E 3 G# 5 B 7 D# 8 E 3 G#

Key: C | G | E